



Ashbridge

INDEPENDENT SCHOOL & NURSERY

Ashbridge on Ribble  
Nursery  
PROSPECTUS

EMPOWERING YOUNG MINDS THROUGH RESPECT AND NURTURE



# WELCOME TO Ashbridge on Ribble NURSERY

Our nursery provides a nurturing environment where children feel happy and secure, allowing them to thrive. Situated on the banks of the River Ribble in the heart of Preston, Ashbridge on Ribble provides unique facilities, together with exceptional experiences and care for children from 3 months to 4 years.

“We felt like part of the Ashbridge family from the moment we walked into Ashbridge on Ribble. My child loves watching the seasons change over the River Ribble and they learn so much from being close to nature. The practitioners are incredibly caring and provide a fantastic early years education.”

**- Parent, Ashbridge on Ribble Nursery**

The highly-qualified staff team are passionate about what they do and prioritise positive and nurturing relationships above all else. They work closely with families to form strong partnerships, working in the very best interests of all their children.

Please enjoy this prospectus, view our website and follow us on social media. Better still, come and visit us to really understand what makes Ashbridge on Ribble such a special place for children and families.

Nursery Management Team

## Our Vision

To instil in our children: innovative thinking skills, a keen curiosity for learning, the confidence to be creative, and respect for themselves, others and the wider world. To follow a nurturing ethos and build positive family partnerships which promote a happy and adventurous childhood.

## Our Values

Our values are at the centre of the Ashbridge experience, and wholly based on what we believe children need to thrive. Whether a child is 3 months old or 11 years old, our values remain the same with the implementation of them tailored to each child's needs, age and stage of development.

## We are committed to:

Empowering children to achieve highly and experience success, realising their individual aspirations.

Respecting children and ensuring their voice is always heard.

Nurturing self-confidence and a positive attitude to life, encouraging resilience and the ability to learn from their experiences.

Immersing children in inspiring environments full of opportunities for learning, exploration and discovery.

Recognising and celebrating the uniqueness of each child to support their interests and help them to pursue their passions.

Providing extensive and varied outdoor learning experiences to allow children to develop a deep love and respect for the natural world and encourage a sense of adventure.





# THE Ashbridge FAMILY

We know that choosing a nursery for your child is an incredibly important decision for you as parents and carers. If you enrol your child at Ashbridge on Ribble, you join the Ashbridge family, and can be sure that you and your family are valued members of our community.

Our team get to know all children and families, appreciating each child's individuality and supporting you throughout your child's nursery journey.

You will be welcomed into nursery classrooms daily, ensuring you can form strong relationships with your child's key person and other practitioners.

“Our children have thrived at Ashbridge; they received outstanding nurturing care and high-quality education from the baby rooms all the way through to pre-school and left for school as confident and curious young people, ready for their next adventure!”

**- Parent, Ashbridge Nurseries**

The Nursery Management Team are supported by an active and experienced Senior Leadership Team, giving them the time and resources to form connections with children and families, as well as driving forward quality care and education.

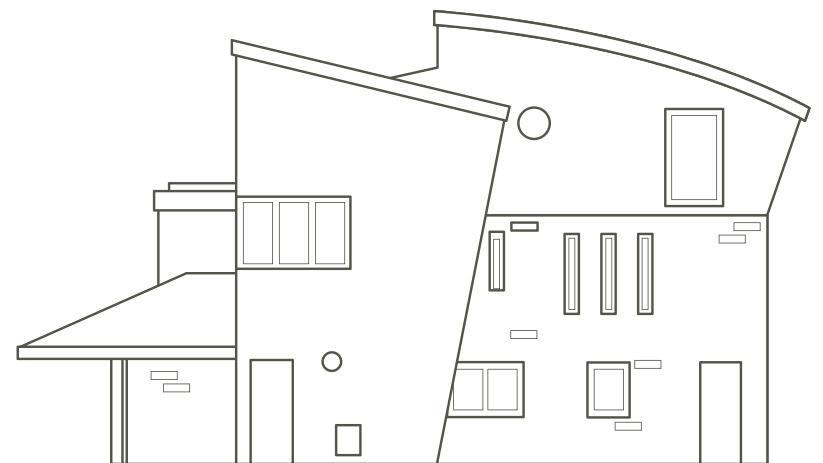


EXCELLENT  
Care AND  
Education

With a broad and inspiring early years' curriculum and graded 'Outstanding' by the Independent Schools Inspectorate, you can be assured that Ashbridge on Ribble will provide your child with the very best nurturing care and early years education.

Our key person approach encourages children to form strong, secure bonds, promoting high levels of wellbeing. Practitioners help children to develop self-regulation skills; critical building blocks for their social and emotional development.

Our curriculum is designed to foster a love of learning, with a rich range of diverse experiences provided for the children. Children enjoy meaningful play activities which provide challenge and motivation, completely tailored for their age and stage of development.





# Experienced AND Committed TEAM

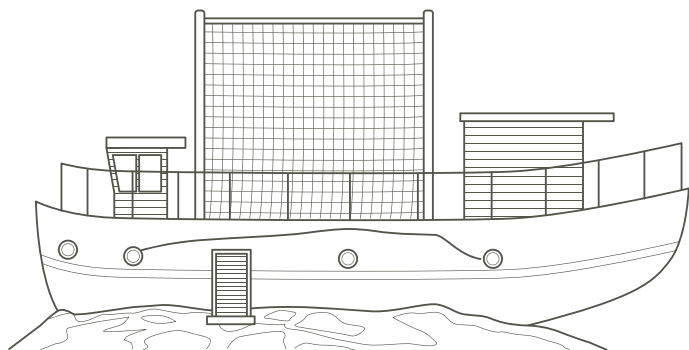
The staff team is highly experienced and includes a qualified teacher in the pre-school class, trained baby specialists for children under the age of 2 and a range of expertise across the nursery, such as qualified Forest Leaders and a Sports Coach. This range of knowledge and skills means children are provided with a broad and varied range of experiences, sparking their curiosity and allowing them to develop their character.

The Nursery Management Team drive the quality of education and promote positive and nurturing relationships throughout the nursery. They will know you and your child well and are always available should you have any questions or queries about your child's nursery experience.

Everything at Ashbridge on Ribble has been developed with children in mind. From our River School, including a converted fishing boat and custom-built adventure zones, to covered outdoor sleeping areas for all ages and a play balcony overlooking the river, the facilities at Ashbridge on Ribble are completely unique.

Children can enjoy watching the seasons change from the balcony, enjoy age appropriate exploration areas, tend to their kitchen garden and be the captain of their very own ship.

Based on the Scandinavian childcare model which promotes independence and confidence, children at Ashbridge on Ribble Nursery thrive in their environment, enjoy natural, holistic play and are free to develop their unique personalities.



Enabling  
ENVIRONMENTS



# Outdoor EDUCATION

We know that outdoor learning from the youngest age benefits children, allowing them to develop their confidence and independence. We strongly believe in managed risk taking, allowing children to explore their limits in a safe and supportive environment, and our custom-built facilities allow children to do this daily.

Our children spend significant time outdoors, with both structured and unstructured play and learning opportunities provided to all ages. Our pre-school children are based at River School, the first of its kind, where they spend their days exploring the banks of the river as well as enjoying a wide range of outdoor adventures.

“Outdoor Education is about children connecting with nature, taking risks independently, and being allowed to be free outside without restrictions, whilst teaching them to be good learners.

It is the best holistic development we can offer our children.”

- Early Years' Outdoor Leader, Ashbridge Nurseries



MOVING ON TO  
**School**



One of the many reasons parents choose an Ashbridge nursery is due to the continuity of care and education offered from 3 months to 11 years. Ashbridge Independent School has been consistently rated 'Excellent' in all areas by the Independent Schools Inspectorate and follows the same nurturing ethos and focus on outdoor learning as Ashbridge on Ribble, together with a strong focus on academic success.

Children at Ashbridge Independent School benefit from a rich curriculum, entitled The Ashbridge Tapestry; combining academic rigour with outdoor learning, Personal Development, extra-curricular activities, sport, Performing Arts, an unrivalled trip and residential programme and a strong focus on pupil voice.

Families are welcome to visit Ashbridge Independent School at any time and enjoy a personal tour with our Headteacher, Karen Mehta, meet our wonderful children and staff team and find out all that Ashbridge Independent School can offer your family.



## Information

**Opening Times** – Ashbridge on Ribble is open 52 weeks of the year, closing only for Bank Holidays. We are open 7:00-18:00 Monday to Friday, providing a year round service for families

**Attendance** – All children attend nursery for a minimum of two full days per week to ensure they benefit fully from the nursery experience and can form strong relationships with their practitioners. All holidays and absences remain payable.

**Meals** – As part of our offer, all meals are provided; including breakfast, and a hot cooked lunch and tea. All meals are cooked on site using fresh ingredients and following a no-added sugar policy.

**Consumables** – All nappies, wipes, suncream and some non-prescription medications are provided including Sudocrem, paracetamol suspension and anti-histamine.

**Fees and payments** – Our current fees information is available on the website or on request from the nursery. Fees are payable monthly in advance by direct debit, tax-free childcare or childcare vouchers.

**Discounts** – For families with more than one child attending an Ashbridge nursery or Ashbridge Independent School, a 10% discount is applied to the child with the lowest fees. We also offer a discount for children attending nursery 5 days per week, as detailed in the fees information.

**Early Years Funding** – Ashbridge on Ribble offers both 15 and 30 hours Early Years Funding, for all children who are eligible. Due to being open all year round for extended hours, the funding is stretched across the 52 weeks of the year. Families wishing to access funded only hours should speak to the Nursery Management Team to discuss the options available.

**Admissions Process** – Children are welcome to join Ashbridge on Ribble at any time in the year, provided the nursery has availability. Families are encouraged to visit the nursery and then are required to submit an enrolment form with £100 registration fee.

A deposit equating to four weeks' fees, less the £100 registration fee is payable before your child starts nursery and their birth certificate must also be provided.

Should parents highlight any additional needs, or if the nursery considers that your child may need extra support, meetings may be held to ensure we can meet your child's needs before a place is offered.

Before your child starts nursery, we offer two complimentary settling in sessions, where your child can spend time in their classroom with their key person getting used to their new environment.

Please note the above information does not apply to families accessing funded only places. Please speak to the Nursery Management Team for more information.

## Get in touch

### **Ashbridge on Ribble Nursery**

London Road, Walton-le-Dale,  
Preston, PR5 4AB

**Visit:** [www.ashbridgeschool.co.uk](http://www.ashbridgeschool.co.uk)  
**Email:** [aor@ashbridgeschool.co.uk](mailto:aor@ashbridgeschool.co.uk)  
**Phone:** 01772 561186



Scan me

# Ashbridge

**Ashbridge on Ribble Nursery**

London Road, Walton-le-Dale,  
Preston, PR5 4AB

**Visit:** [www.ashbridgeschool.co.uk](http://www.ashbridgeschool.co.uk)  
**Email:** [aor@ashbridgeschool.co.uk](mailto:aor@ashbridgeschool.co.uk)  
**Phone:** 01772 561186



**Ashbridge**

INDEPENDENT SCHOOL & NURSERIES